



SCHOOL TRIPS

Millets Farm Centre





We believe the best way to learn is through adventure.

Here at Millets, we have lots of different activities to inspire young minds; from exploring our farm and countryside in relation to your chosen topics or choosing 1 of our activities to experience a “hands on” approach. With both outdoor & indoor learning you can turn classroom theories into practice all year round. Excellent learning opportunities, whatever the weather.



Whilst having fun is part of any trip, as a teacher you also need to be thinking about what you want your class to take away from the experience. A clear set of learning objectives will make sure your children do not miss out on getting the most from their time at the farm.

Some of the more popular topics that schools choose to study while visiting us include:

Animals, nature and lifecycles.

PAID ACTIVITIES



PYO

KS 1 & 2
£5 per child



FALCONRY

KS 1 & 2
£7.95 per child



PLAY BARN

EYFS
£7 per child

PAID ACTIVITIES



PUMPKINS

KS 1 & 2
£5 per child



MAZE

KS 1 & 2
£5 per child

Pick Your Own

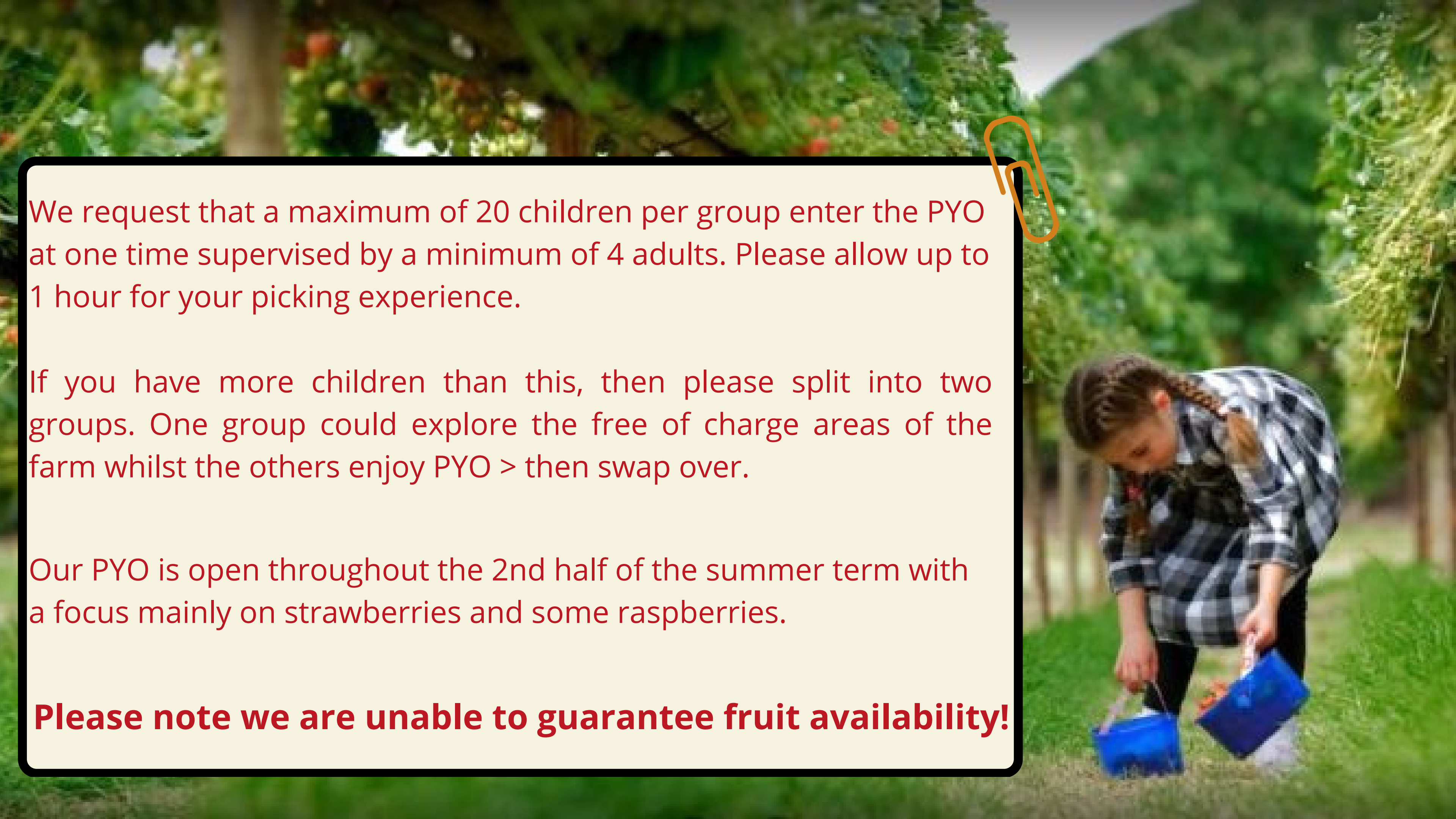
Field to Fork, it's what we're famous for! Visit our fruit fields and pick what's available with your own hands.

Every child will get the chance to pick strawberries to take home and enjoy. A great way to learn how different crops grow and to encourage healthy eating, plus learn where food comes from.

£5.00 per child which includes a small punnet of (approx.10) strawberries. Accompanying supervising adults free of charge unless picking their own punnets.

SEASONAL ONLY





We request that a maximum of 20 children per group enter the PYO at one time supervised by a minimum of 4 adults. Please allow up to 1 hour for your picking experience.

If you have more children than this, then please split into two groups. One group could explore the free of charge areas of the farm whilst the others enjoy PYO > then swap over.

Our PYO is open throughout the 2nd half of the summer term with a focus mainly on strawberries and some raspberries.

Please note we are unable to guarantee fruit availability!

LEARNING OBJECTIVES

To understand that fruit and vegetables are an important part of a balanced and healthy diet.

To explore the range of fruit grown in our country.

To explore seasonality, what other foods may we find locally?

Take away ideas to plan a school growing garden.

Farming through the seasons.

Our relationship with the foods we eat.

Food miles.

Does all food come from a farm?

What should you do to check it is safe?

What kinds of other food can you make from this crop?

Find out and describe how plants need water, light and sustainable temperature to grow and stay healthy.

Quantities, counting exercise whilst picking and placing fruit into punnets.

PYO VOCABULARLY:

Produce, Harvest, Fruit, Conditions, Trade, Nutrients, Crops, Locally, Ingredients.

Maize Maze

Maize Maze

£5

With lots of puzzles to complete in our woodlands, maize mazes to navigate, go-karts and garden games for everyone to enjoy!

A school visit to our Maize Maze provides a unique, fun outside learning experience with the opportunity to expose children to agriculture in the process.

£5.00 per person.

SEASONAL ONLY



LEARNING OBJECTIVES

- Improve the cognitive skills of children
- Sharpens their memory, builds their focus and increases the concentration



- Map Reading
- Orienteering
- Problem Solving
- Compass Reading
- English
- Decision Making
- Geography
- Teamwork



PYO PUMPKINS £5.00

Oct OFF PEAK

Our PYO pumpkin patch is a MUST visit during Autumn at Millets.

£5.00 per child which includes 1 small pumpkin. Accompanying supervising adults free of charge unless picking their own pumpkins.

SEASONAL ONLY

Falconry



What better way to learn about predators and prey than by visiting Oxfordshire's largest falconry and wildlife centre. With over 100 birds of prey, meerkats, skunks, raccoons and reptiles you'll be able to get up close and personal with a huge range of animals. The brand new butterfly house and otters and crocodile is a MUST see!

BRAND NEW Butterfly House just opened with crocodiles coming soon too!





NEW!
We have just moved in!
Come and meet us



£7.95 per child. (One free adult per 10 children) Additional adults £9.95
Or a Guided tour talk and handling £9.95 per child. An enjoyable ,engaging and educational visit for all.

LEARNING OBJECTIVES

Migration

Falconry & the history of
medieval times.

Species

Raptor Groups

Conservation and Protection

Predator/Prey Interaction

The food chain

Habitats & Adaptions

Flight

Owls, Eagles & Falcons

Vocabulary:

Cast

Mutes

Beak

Hen

Bind


Mantle

Braces

Bate

Brail

Feather



NURSERY & EYFS £7 per child.
Includes private room for your group!
Supervising adults free.

Explore Mr Sprout's amazing 4 tier play frame, there is so much fun to be had but many don't realise our frame is packed full of educational elements too!

The best thing is children will have so much fun they won't even realise they are learning!

9.15-11.30am or 12.00-2.30pm Sessions



EDUCATIONAL PLAY

- Spot and count the Brussel Sprouts lost in our play frame.
- Can you find the hidden spiders?
- Reach the span of an Eagle in our falconry area.
- Post letters and enjoy all our role play across 7 shops.
- Learn about the Battle of Trafalgar at the top of our frame.
- Become an expert in facts on making honey.
- Learn all about the history of honey bees.
- Can you work out which leaves fall from which tree?
- Learn about all different weathers and storms!
- Jump onto our piano to find your musical feet.
- Animal facts to explore.
- History of growing a Maze.

**Brand New
Outdoor Play**



LEARNING OBJECTIVES



- *Motor Skills
- *Decision Making
- *Team Work
- *Problem Solving
- *Spatial Awareness
- *Sensory Stimulation
- *Exploration & Discovery

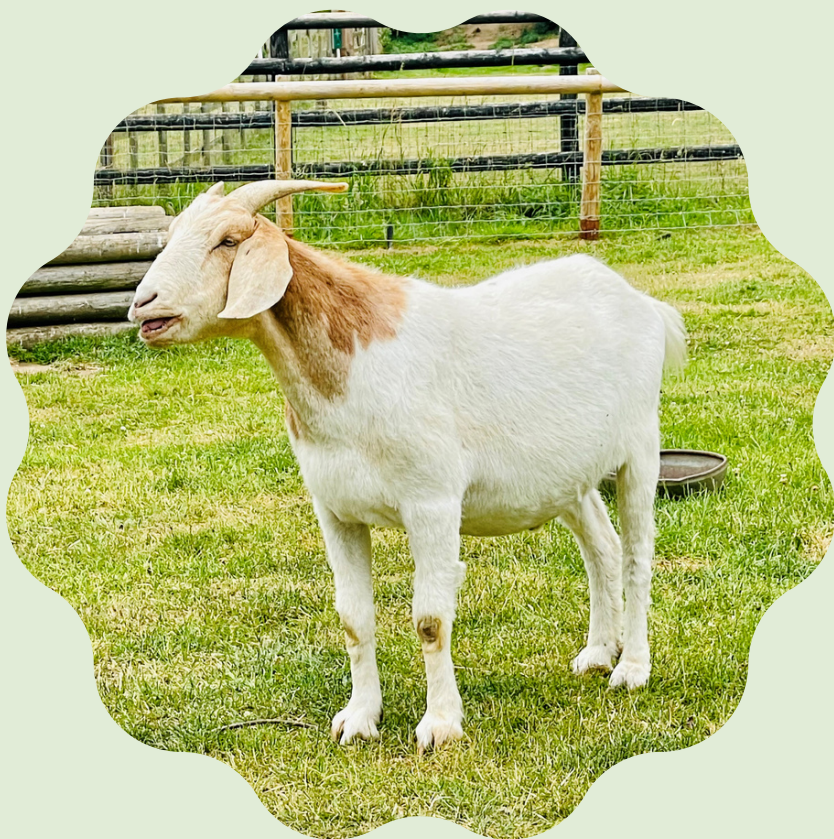


Personal, social & emotional development: We have plenty of opportunities with Sprouts to play with other children, familiar and unfamiliar. Sharing items in our role play area and garden.



Physical Development: The perfect opportunity for children to test their bodies to the limit. Jump, climb, slide all with soft landings!

FREE ACTIVITIES



ANIMALS



WOODS



SOLAR


KS 1 & 2

KS 1 & 2

KS 1, 2 & 3

ANIMAL WALKWAY

EYFS & KS1



We have a small selection of farm animals including goats, alpacas and donkeys. Note our animals move to winter accommodation from Nov - April.

Our animal walkway is a look & see area only.

Towards the bottom of the walkway, we have a dedicated area where duck food can be thrown for our waterfowl visitors to enjoy.



Farm Animal Learning Objectives:

Animal match up
Learning animal noises
Caring of animals
Who's the biggest
Where do you live?
Mammals, pets, zoo, farm
Products from animals
Head to toe
Difference between animals
Houses, homes & habitats
Animal babies
Animal lifecycle

Farm Animal Vocabulary:

Calf, cow, cattle, duck, duckling, shelter, enclosure, goats, rabbits, hay, grass,


PHOEBE WOODS

KS1 & 2

Phoebe Wood is a 10 acre site comprising of woodland and wetland walks along the banks of the River Ock as well as picnic facilities.

Our wood was planted in 2005 to commemorate the bicentenary of the Battle of Trafalgar and part of the National Trafalgar Wood Project.

Children can discover tiny woodland creatures and even have a go at a nature trail.



Soak in the sights, sounds and smells whilst learning about the great outdoors. Look out for our tips to help support in your garden at home.

Learning Objectives:

Forest & Woodland

Wildlife

Habitats

Lifecycle of an insect

Numeracy (measuring/sorting natural objects)

Links to the war and Battle of Trafalgar

Find out and describe how plants need light, water.

Identify and name a variety of common wild and garden plants and trees.

Describe the basic structure of common flowering plants.



Woodland Vocabulary:

Shrubs, glade, ash, tree, clearing, dew, fungi, bark branches, stream, fern.

SOLAR

KS1 & KS2

We have a solar farm located within our PYO area, producing electricity for the site. The panels can be viewed from behind a fence.

Learning Objectives:

- Learn about carbon, renewable energy
- Explanation of solar power and how it helps save the planet
- Outline the pros and cons of solar energy.
- Describe sources of other renewable energy.
- Define renewable & non renewable energy.
- Provide examples of common types of resources?
- Understand and explain general ways to save energy personally.
- How passive solar heating, hydropower and wind power work.
- How engineers design more efficient ways to generate power.

SOLAR VOCAB:

Meter

Grid

Electric

Passive

Solar

Cells

KwH

Inverter


Guidance Notes



Millets Farm is a free to enter site. There is coach parking located to the right of the Garden Centre. Coaches can drop off outside Sprouts then drive round to park if necessary. We have various toilet facilities around site. Lots of picnic areas can be found including by the Animal Walkway, Phoebe Woods and an area by the Maze car park. Please note none of these are under cover.




PRIVATE SPACE



£50.00 with Activity
£80.00 Room Only

Enjoy a discounted price when booked alongside a paid school trip activity,

Room included with a Sprouts school trip booking.



Why not hire a lockable room with outside entrance door to allow access to other areas of Millets as well as an entrance into Sprouts for those including a play session.

Add on some
Picnic Bags
£5



BOOK YOUR VISIT

To book your visit to us it is really simple! Just follow the steps below.

If you have any questions at all please email: enquiries@millettsfarmcentre.com
We really look forward to welcoming you to site soon.

**Booking
Form**

**20%
Deposit**

Confirmation
Programme of
your day etc sent.

**Final
Balance**
Due 7 days prior